

Volume 36 / Issue 3
September 2016



www.appaalas.org

News & Views

Appalachian Branch
American Association for Laboratory Animal Science

Celebrating



Did you know the Appalachian Branch is celebrating 25 years since sanctioned by the AALAS Board of Trustees in 1991? In the *History of the Appalachian Branch of AALAS*, Steve Blevins takes us back to our Branch beginnings. **P. 6**

News & Views

Appalachian Branch
American Association for Laboratory Animal Science

Officers

President:

Patti Coan, DVM, PhD, DACLAM
University of Tennessee
865 974-5634
pcoan@utk.edu

President-Elect:

Patty Chen, DVM
Vanderbilt University
615-322-2231
patty.chen@vanderbilt.edu

Past-President:

Jeremy Parker, MS, CMAR, RLATG
Vanderbilt University
615-322-2231
jeremy.m.parker@vanderbilt.edu

Secretary/Treasurer:

Dana Gray, RLAT
dana.gray.appbranch@gmail.com

Board of Directors

Wesley Fox, BS, LATG
Vanderbilt University
615-322-7295
andrew.w.fox@vanderbilt.edu

Wes Adams
University of Tennessee
865-974-6763
wadams14@utk.edu

Phillip Sullivan, MS, LVMT, RLATG
Vanderbilt University
615-322-2231
phillip.n.sullivan@vanderbilt.edu

Technician Branch Rep.

Donna LeMay, RLAT
Vanderbilt University
615-322-2231
donna.m.lemay@vanderbilt.edu

Webmaster:

Steve Blevins, BS, RLATG
Highlands BioMed, LLC
423-677-8624
steve@highlandsbiomed.com

Newsletter Editor:

Yolanda Perez, MSA
Vanderbilt University
(615) 343-3591
yolanda.perez@vanderbilt.edu

Contact us via email: info@appalas.org

contents

In every issue

President's Message	3
TBR Corner	22, 27
In the News	8
Calendar of Events	4
Facility News	15
Two Thumbs Up	21
Puzzle Zone	13, 18
Amazing Science	14



In this issue

From the Editor	4
Summer Meeting Highlights	10
<i>History of AppAALAS Branch</i>	6, 7
AALAS National News	17
Call for Nominations	16
District 4 Meeting	19
District 4 Travel Award	20
National AALAS Travel Award Winner	28



Membership

Individual Membership	22
Commercial Membership	23

President's Message

We would like to thank everyone who attended the Summer Appalachian Branch AALAS meeting at the University of Tennessee in Knoxville in August. We had great attendance as well as great enthusiasm for the topics. "What's she lying in? The role of bedding in the welfare of dairy cows" presented by Dr. Peter Krawczel, delivered a powerful message on how important the welfare of animals in our care should be. One member of the audience even said "I wish someone very much like him had been around when I was in graduate school as I would have definitely have tried to get involved with behavioral studies—not as a subject but as a student"! Jeff Kaufman's presentation "Feeding lower protein diets improved milk production and nitrogen efficiency in lactating dairy cows experiencing heat stress" showed how the diet and environment of animals in our care affects their performance. It is refreshing to see the value of animal welfare being included in the production arena. Dr. Raúl Almeida's presentation "Development of Vaccines for *Streptococcus uberis* Mastitis" discussed how the health and well-being of animals in our care affects their performance. The ability to take over 25 years of focused research and present it in an interesting and enjoyable 20 minute presentation is a rare feat. "Cattle as natural models of respiratory infections" presented by Dr. Marc Caldwell delivered a strong message on how we should take care of young animals and try to prevent stress as much as possible. His analogies were very helpful. We really enjoyed learning about shipping stress and respiratory infectious diseases of cattle in a fun and informative way.



The beef and dairy luncheon fit well with our theme and the food was excellent. The tour of the Little River Dairy was a great hit, especially learning the



importance of the Research and Education Centers in the state of Tennessee and getting the see an actual dairy farm with the cows and calves. We would like to thank everyone for their attention to detail during the tour and vigorous handwashing at the end. We are proud to announce that no zoonotic diseases were introduced to the participants!

We were pleased to announce that two individuals in the branch were voted to receive the National AALAS Annual Meeting Travel Award this year: Dana Gray and Allen Carpenter. They will write an article for the December Branch Newsletter or do a platform session at the Branch Winter Meeting about what they learned, their impressions of the meeting, and what they gained by attending.

We had no entries for the new logo contest. This indicates to the officers and the BOD that you are happy with the current logo and we will not try to change it.

We hope that everyone enjoys the rest of their summer (if any is left) and cheers to a new fall season.

Sincerely,

Patti Coan, AppAALAS President

From the Editor

Welcome to this special issue which celebrates the 25th Anniversary of our Appalachian Branch. As we think on the impact we have made throughout the years, we can only hope that we continue to do so in the years to come. The 25th Anniversary provides the opportunity not only for celebration but also to look to the future to the next 25 years.

The Appalachian Branch's homepage clearly states our mission, aims and goals: ***We are dedicated to the advancement of laboratory animal science primarily through education, training, and information exchange. The ultimate goal being improvement of both human and animal health. In concert with this aim is the enhancement and development of the careers of our technical support staff members.***

Our membership is comprised of professionals dedicated ***to the humane treatment of laboratory animals, as well as the quality research that leads to scientific gains that benefit people and animals*** (AALAS.org mission statement).

None of our accomplishments would have been possible without **YOU**.... Get involved!

Please email me at yolanda.perez@vanderbilt.edu to get your article published in our next issue.



Calendar of Events

October 2016

- | | |
|----|---------------------------------------|
| 10 | Columbus Day |
| 30 | 67th AALAS National Meeting |
| 31 | Deadline for Nominations AppAALAS BOD |
| 31 | District 4 Travel Award Application |



November 2016

- | | |
|----|------------------------------------|
| 24 | Thanksgiving Day |
| 25 | Black Friday, National Parfait Day |

December 2016

- | | |
|----|-------------------------|
| 24 | Christmas Eve |
| 25 | Christmas Day, Hanukkah |
| 31 | New Year's Eve |





PMI® LABDIET®

LABORATORY ANIMAL CARE COURSE

Receive your Laboratory Animal Care Course certification in a convenient NEW online format! This internationally recognized course is designed for everyone working with small animals – from new employees to those advancing to the ALAT.

Visit www.pmi-lacc.com to efficiently learn the core principles of laboratory animal care!

- **Includes 6 lessons**
- **Work at your own pace**
- **Grades reported immediately**
- **Certificate issued upon successful completion of the course**
- **Online payments accepted**
- **Total cost of enrollment is \$50**



TO ENROLL:
i-lacc.com today!

FOR MORE INFORMATION:
Contact Tricia Lutman - 636.742.6295
Or info@labdiet.com

www.pmi-lacc.com



Research Models & Services

Contact your Harlan representative for Research Models & Services and Teklad Diets, Bedding, and Enrichment needs.

Christine Reaves
919-455-7701
creaves@harlan.com

harlan®
www.harlan.com
800-793-7287

© 2014 Harlan Laboratories, Inc.
Harlan and the Harlan logo are trademarks of Harlan Laboratories, Inc.

THE ANDERSONS BEDDING SYSTEM™



Enrich-o'Cobs®
PREMIUM BLENDED
ENRICHMENT BEDDING



Enrich-n'Nest™

THE ULTIMATE
ENRICHMENT

Crink-I'Nest®
HIGH QUALITY
NESTING MATERIAL



- Reduce Rodent Stress
- Improve Animal Welfare
- Improve Accuracy of Study Results
- Increase Efficiencies in the Lab

P.O. Box 119 Maumee, Ohio 43537 | 1-866-234-0505, Ext. 6511
AndersonsLabBedding.com

The Andersons
LAB BEDDING PRODUCTS

GENETIC STABILITY

JAX safeguards your research data ensuring it is reliable, repeatable and reproducible. Through rigorous refreshing of foundation stocks, JAX Genetic Stability Program effectively limits cumulative genetic drift so your data can last for generations to come.

To learn more
contact your JAX regional
representative, [Ella Torian](#)

1-207-266-8685
ella.torian@jax.org



**The Jackson
Laboratory**

History of the Appalachian Branch of AALAS

*Our parent organization is celebrating 67 years at the AALAS national meeting in Charlotte next month. It's hard to believe and quite awesome to be celebrating 25 years since our AALAS branch was formed. I am fortunate to have been involved with such a great group for the majority of my professional career. Yolanda and I thought it would be a good idea to enlighten you young whippersnappers on our beginnings. As a founding member still actively involved with the Branch I am occasionally asked questions about various aspects of the operation and activities occurring over the course of our Branch history. Some answers I can look up and support with documentation but many are to the best of my recollection, which may or may not be accurate with 'old-timers' slowly setting in. We do not have an official historian position so I am going to rely heavily on the 1999 AALAS book, **50 Years of Laboratory Animal Science**. It has a great section on Branch histories and ours is one of the better documented. I'll not try to do a detailed who, what and where for 25 years and instead focus on how we got started.*

There had to be a national association before there could be affiliated Branches. Several institutions in the Chicago area are credited with legitimizing Lab Animal Science as a real field of professional endeavor. In the mid 1940's there was increased government funding for science and health based research. Many in the field realized a dire need for lab animal veterinarians and skilled animal technicians. Facilities were in basements, barns and closets with homemade wood and wire enclosures. They were appalling with vermin infestations, poor sanitation and temperature extremes. Unhealthy colonies needed to be cleaned up, standards of care established and the research animals deserved quality humane care to achieve reliable experimental results. These groups collaborated around the country and with a few years of successful meetings under their belt the Animal Care Panel was formed in 1950. In 1967 the name would be changed to the American Association for Laboratory Animal Science (AALAS). AALAS headquarters was moved from Illinois to Memphis in 1986.

Recognizing a need for education and training for technicians on a regional level, AALAS established criteria for affiliate branches in 1960 and in the first year approved 10 new branches. So how did the Appalachian Branch come to be? We did not have a branch within easy travel distance. ETSU and UT participated with SEALAS and Nashville folks were in limbo as the Mid-South branch had become inactive. Interest grew for something more convenient. On December 14, 1990, Dr. Ed Schroeder (UTK), Debbie Hampstead (UTK), George Holburn (Vandy), and Dr. Gary Borkowski (Vandy) met in Room M303 of the Walters Life Sciences Building at the University of Tennessee for a preliminary meeting to determine the feasibility of forming a local branch.

An interest survey letter was drafted for mailing on January 7, 1991. Institutions targeted were: University of Tennessee-Knoxville, Oak Ridge National Laboratory, Oak Ridge Associated Universities, Lincoln Memorial University, Virginia Tech, University of Chattanooga, East Tennessee State University, Middle Tennessee State University, Meharry, and Vanderbilt. Representatives from Vanderbilt were selected to telephone facilities in middle Tennessee and representatives from the University of Tennessee were selected to telephone facilities in

East Tennessee and Western Virginia. The next meeting was scheduled for January 25, 1991, at the College of Veterinary Medicine at UTK. Those attending the meeting were: Debbie Threadgill (Maryville College), Steve Blevins (ETSU), Dr. Brunhilde Tober-Meyer (ETSU), Debbie Hampstead (UTK), Dr. David Sly (Vandy), Cheryl Davis (UTK), Ron Roberts (UTK), Sonia Doss (UTK), Dr. Gary Borkowski (Vandy), George Holburn (Vandy) and Dr. Ed Schroeder (UTK).

Dr. Borkowski acted as president and Debbie Hampstead as secretary. Two committees were formed to begin the process of Branch formation. The Constitution Committee was charged to have a constitution and by-laws ready for adoption at the next meeting, scheduled for April 5, 1991 in Knoxville. The Agenda Committee was charged to develop a program outline for Branch meetings. At the April meeting, the Branch constitution and by-laws were amended and adopted. Then elections were held and the first Branch officers were: George Holburn (Vandy), President; Steve Blevins (ETSU), President-elect; and Debbie Hampstead (UTK), Secretary/Treasurer. The first members of the Board of Directors were: Sherry Harbin (UTK), Dr. Brunhilde Tober-Meyer (ETSU), Debbie Threadgill (Maryville College), and Dr. David Sly (Vandy). The name Appalachian Branch was selected to reflect the Branch membership from Tennessee, Kentucky, and Virginia. A Branch logo was selected from member submissions and remains in use today.

At the July 19, 1991, meeting held at East Tennessee State University, the Branch had 43 paid members. An Education Committee was formed with Dr. Brunhilde Tober-Meyer (ETSU), as the chair-person; Sherry Harbin (UTK); and Michael Eades (Vandy). The goal was to establish an active AALAS Certification program at all three universities. It was decided early on that the Branch would be expressly for our technicians, affectionately referred to as "the troops". The aim being the enhancement and development of the careers of our technical support staff members.

On October 20, 1991 at the AALAS national meeting the AALAS Board of Trustees officially approved the Appalachian Branch of AALAS as their 47th Branch. Once officially recognized the Branch established a member awards program including: Technician of the Year, Purina Prolab, Travel Award-District 4 Meeting and Merit Award. In 1998 a Travel Award to the national AALAS meeting was added. Sonia Doss (UTK) was the winner of the first Travel Award to the 1998 National Meeting. Later a Vendor of the Year award was also added. We were blessed with outstanding support from the vendor community which was crucial to getting the Branch off the ground.

The Branch continued with a 3 meetings per year format with winter, spring, summer and a fall meeting of the Board of Directors at national AALAS. The fall Board meeting was discontinued after a few years due to the unpredictability of available travel funds. We continued with the 3 meeting per year format for several years rotating between Johnson City, Knoxville and Nashville. Over time attendance waned for the Johnson City venue so the Board decided to go to 2 meetings per year rotating between Knoxville and Nashville. The Branch continues to be solvent and successful after 25 years. We will be recognized for this accomplishment during the general membership meeting at the National AALAS meeting in Charlotte next month.

Thanks to everyone who have dedicated their time, effort and devotion to this worthy cause. Congratulations on a job well done. Here's to 25 more!

Submitted By: Steve Blevins

In the News



The Genetics of Blood Pressure

By: NIH Research Matters: Tianna Hicklin, PhD Published: Sept 20, 2016

Large-scale studies of the genetic influences on blood pressure revealed dozens of new genetic variations associated with a risk of high blood pressure. The findings will lead to a better understanding of the complex factors that affect blood pressure and may lead to new treatment approaches.



Transparent Lab Mice May Reduce Number Needed for Research

By: Ludwig-Maximillians University; Published: August 24, 2016

A new and versatile imaging technique enables researchers to trace the trajectories of whole nerve cells and provides extensive insights into the structure of neuronal networks. Lesions caused by traumatic brain damage, stroke and functional decline due to aging processes can disrupt the complex cellular network that constitutes the central nervous system, and lead to chronic pathologies, such as dementia, epilepsy and deleterious metabolic perturbations.



Mouse Study Suggests Brain Circuit Involved in Sleep-Wake Cycle

By: Liz Alverson, Published: May 16, 2016

Scientists say they've identified a brain circuit in mice that plays a key role in the sleep-wake cycle. The circuit is a key component of the brain's reward system, according to researchers from Stanford University in Palo Alto, Calif. The investigators saw that as the mice ramped down for sleep, activity in this brain circuit decreased. The researchers also saw that activating this circuit could rouse the animals from sleep. These findings could potentially lead to new treatments for sleep problems, the

LabDiet

Your work is worth it.

George Nugent

DIRECTOR



P.O. Box 19798 | St. Louis, MO 63144

PHONE: 636-742-6294 | MOBILE: 314-422-2867 | FAX: 636-742-6166

EMAIL: George.Nugent@PurinaLabDiet.com | WEB: LabDiet.com

LabDiet® is a registered trademark of PMI Nutrition International, LLC.

Allentown

Scott A. Hoy

District Sales Manager

Allentown, Inc.

165 Route 526

Allentown, NJ 08501

Home Office: 804-639-2762

Corp. Office: 800-762-2243

Cell: 609-273-5520

shoy@AllentownInc.com

www.AllentownInc.com

Allentown, Inc. | Allentown Europe | Allentown France | Allentown Deutschland | Allentown Italia

Bio Serv

Delivering Solutions...

♦ Nutritional ♦ Enrichment ♦ Medicated ♦ Special Needs

ISO 9001:2008 Certified

Ph: 800-996-9908

Fax: 908-996-4123

www.bio-serv.com

Karena Thek, MBA, CMAR

National Sales Manager

Cell: 908-255-9145

Fax: 610-381-4088

Email: kthek@bio-serv.com

TECNIPLAST

Robert TYRRELL

client representative

Cell 484 798 3205 • E-Mail: rtyrrell@tecniplastusa.com

Tecniplast USA
PO Box 1209
West Chester, PA 19380
Toll Free 877 669 2243
Fax 484 875 0511
www.tecniplastusa.com

The Jackson Laboratory

Ella Torian

Opportunity Development Manager

ella.torian@jax.org

207.288.1404 t

207.266.8685 m

610 Main Street
Bar Harbor, ME 04609

www.jax.org

charles river

every step
of the way.

LORIE BOYD, B.S., LATG

Regional Manager

251 Ballardvale Street, Wilmington, MA 01887

Direct: 781.222.7087 • Mobile: 919.723.8356

lorie.boyd@crl.com • www.criver.com

Edstrom

ISO 9001:2008 Certified

Arnie Markwald

North American Sales Manager

arnie.markwald@edstrom.com

800 558 5913

262 492 7258 Cell

262 534 5181 ext 255

262 534 5184 Fax

819 Bakke Avenue

Waterford WI 53185

www.edstrom.com

harlan

Helping you
do research better

Jim Cole

Region Sales Manager, Southeast
Research Models and Services

Harlan Laboratories, Inc.

8520 Allison Pointe Blvd.

Suite 400

Indianapolis, IN 46250

Phone 410 529-2886

Mobile 443 416-8660

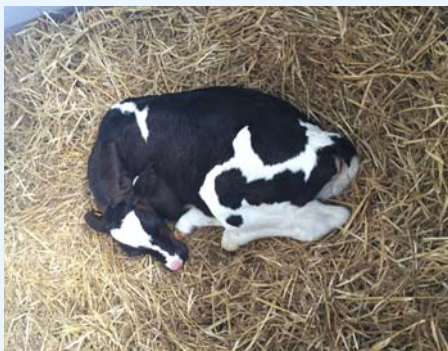
Fax 317 806-6068

jcole@harlan.com

www.harlan.com

President's Club Member

Summer Meeting Highlights



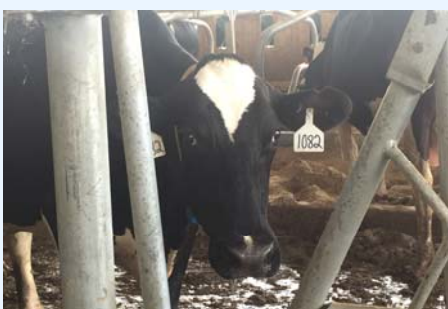
The 2016 Appalachian Branch AALAS Summer Meeting was held on August 12, 2016 in Knoxville. Special thanks to the University of Tennessee, Knoxville and each of the individuals involved with organizing and coordinating the meeting!

The theme for the summer meeting was cows. Our guest speakers —Dr. Peter Krawczel, Jeff Kaufman, Dr. Raúl Almeida, and Dr. Marc Caldwell— presented topics on environment, diet, animal welfare and how these affect the animal's performance.

We closed the day with a tour of the Little River Animal and Environmental Unit at the East Tennessee Agricultural & Education Center. The primary emphasis of the unit is Holstein cow milking and production, as well as extensive studies that evaluate the interaction between animal agriculture and the environment. Aside from Holstein production and milking, the Little River Dairy is also home to a few crop research projects including 200 acres of production cropland, and 50 acres of pasture. The unit also produces it's own hay and corn silage.

Looking forward to seeing everyone at our next branch meeting!

Submitted by: Yolanda Perez



Taking Sentinel Animals Out of the Testing Picture.



SENTINEL

The Next Generation of Colony Health Monitoring:

- Less sentinel animals used*
- More accurate results than traditional sentinel testing
- Reduced labor & costs
- Backed by two trusted names: Allentown & Charles River

Allentown  **charles river**

View a free web presentation at www.AllentownInc.com/Webinars/Sentinel

* Sentinel animal use estimated at 750,000 - 1,000,000 animals worldwide per year.
Patent Pending, Allentown Incorporated and Charles River Laboratories





ISO 9001:2008 Certified

Carmen Costa
Sales Consultant

800 558 5913
Cell 704 675 1299
Fax 262 534 5184

carmen.costa@edstrom.com

819 Bakke Avenue
Waterford WI 53185
www.edstrom.com



IACUC, Facility and Breeding Colony Software

J. Patrick Guider Jr.
General Manager

phone +1 (512) 243 8539
mobile +1 (512) 589 5431
skype pat.guid1
pguider@a-tune.com

a-tune software Inc.
3000 Joe DiMaggio Blvd.
Suite 57 • Round Rock, TX 78665
USA

www.a-tune.com



John L. Tonkinson, Ph.D.

Director, North American Opportunity
Development

john.tonkinson@jax.org

207.664.4684 t

610 Main Street
Bar Harbor, ME 04609

www.jax.org

THOREN
CAGING SYSTEMS

Andy Minenna
International Sales Manager

Over 60 Years of Innovation
Quality - Performance

815 West Seventh Street
Hazleton, PA 18201
phone: 570.455.5041 ext. 206

Mobile: 732.310.5432
Fax: 570.454.3500
andym@thoren.com
www.thoren.com

Validated Delivery Solutions

Call Center: 877-355-3773

Eric A. Syversen

VP, Animal Transportation

P: 443-878-5514

F: 877-854-1451

E: eric@vcgrc.com

www.validatedcourier.com

**VALIDATED
DELIVERY SOLUTIONS**

Research Animal Delivery Done Right and At the Right Price

LabDiet

Your work is worth it.

Kristin Robertson, MS

ACCOUNT MANAGER

P.O. Box 450190 | Sunrise, FL 33345

MOBILE: 954-393-7500

EMAIL: KERobertson@landolakes.com | WEB: LabDiet.com

LabDiet® is a registered trademark of PMI Nutrition International, LLC.



Warren Riley
Sr. Account Representative, MW
warren@innoviveinc.com

Innovive Inc
Indianapolis, IN

M (317) 501-4341
D (858) 309-6653
F (858) 309-6621



Britz & Company

Bio-Containment
Animal Housing
Britz Design

Enriching the Lives
of Animals and Humans

Julie Worthington
Sales Manager

Phone: 307-322-4040

Fax: 307-322-4141

sales@BritzCo.com
www.BritzCo.com

PO Box 1179 • 1302 9th Street
Wheatland, WY 82201

Puzzle Zone

Match the animal and their characteristic

- _____ 1) Rabbit
- _____ 2) Hamster
- _____ 3) Guinea pig
- _____ 4) Ferret
- _____ 5) Llama
- _____ 6) Rat
- _____ 7) Cow
- _____ 8) Horse
- _____ 9) Gerbil
- _____ 10) Goat
- _____ 11) Cat
- _____ 12) Dog



Solution P. 18

- A) Scientific name means “stinky little mouse killer thief”
- B) Can be restrained in a kush position
- C) Can walk upstairs, but not downstairs
- D) Peg teeth
- E) Height is measured in “hands”
- F) Cannot taste sweetness
- G) Flank glands
- H) Rodent that has precocial young
- I) Prefer to excrete with the body being aligned along the North–South axis under calm magnetic field conditions
- J) Rodent that lacks gallbladder
- K) Are foragers, not grazers
- L) Thump their rear legs when excited or stressed

Amazing Science

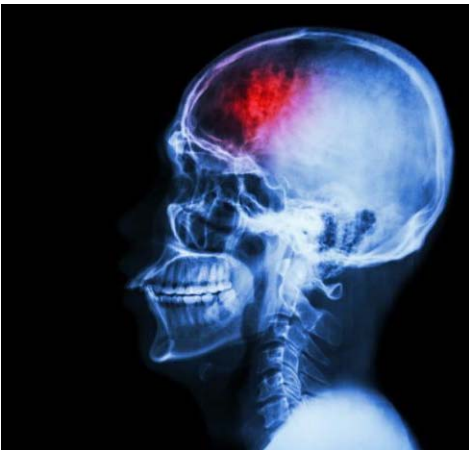


Human Cell Transplants Treat Mice with Spinal Cord Injury

By: Lisa M. Krieger; The Mercury News; Published: Sept. 23, 2016

Researchers have successfully transplanted healthy human cells into mice with spinal cord injuries, bringing the world one step closer to easing the chronic pain and incontinence suffered by people with paralysis.

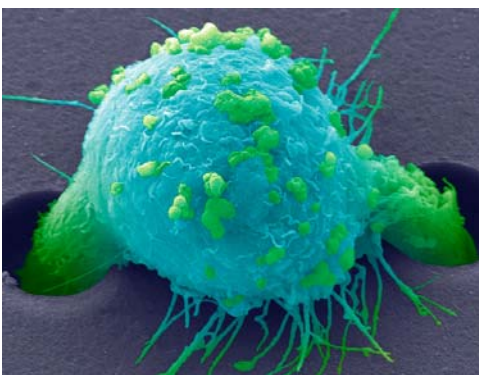
The research team did not focus on restoring the rodents' ability to walk; rather, it helped remedy these two other debilitating side effects of spinal cord injury.



Brain Cells Restored by Stem Cell Therapy Following Stroke

By: Marie Ellis; Medical News Today; Published: August 22, 2016

When a person has a stroke, blood flow to the brain is interrupted, causing brain cells to die within minutes due to lack of oxygen. In some cases, this can result in paralysis, speech and language problems, vision problems, and memory loss. But in a new study, researchers have shown that stem cell therapy increases nerve cell production in mice with brain damage due to stroke. The researchers published their findings in the journal *Natural Medicine*.



Body Clock Gene May Help Lethal Spread of Breast Cancer

By: Linda Geddes; Daily News; Published: Sept. 22, 2016

Breast cancer is the most common type of cancer in women. Can the body's circadian rhythms influence cancer? Shift workers are more prone to cancer, and now a study in mice has found that changes to a gene that regulates the circadian clock seem to increase the likelihood of breast cancer spreading and becoming deadly. The finding could mean that disrupted sleep may worsen a person's breast cancer prognosis.

(Credit: Teve Gschmeissner/Science Photo Library)

Facility News



EAST TENNESSEE STATE
UNIVERSITY

Looking back at our facility news for the last newsletter, we were prepping for our AAALAC site visit at that time. The site visit went very well, and now we are back to business as usual. However, our rodent census has increased significantly in the past few months, so things are still quite busy in DLAR!

Dr. Hanley and I were able to attend the branch meeting at UT, and thoroughly enjoyed the talks and the trip to the Little River Dairy. Thanks to everyone who was involved in the meeting!

Submitted By: Jennie Hoard



No update.



No update.

VANDERBILT UNIVERSITY
MEDICAL CENTER

Greetings everyone from Vanderbilt University Medical Center, Nashville. It's been a great summer for everyone here and we look forward to the changing colors as autumn approaches.

Many of us were able to attend the summer meeting in Knoxville and had a wonderful time. It was great fun learning, visiting each other, and taking a tour of the dairy. The burgers and milkshakes were awesome and we look forward to our next meeting. Thank you UT for hosting our event!

We would like to welcome some new employees to our facilities. Our new animal care technicians are Ashley Tripplet and Bethany Bruce. Rocky Rakhsha has joined the program as our new administrative assistant. Thank you for joining our team!

Congratulations are in order for Jenny Taylor who is our new supervisor at the MCN2 facility. Awesome shout out to Dr Carissa Jones who began her

job as a Clinical Veterinarian. We know you both will do a great job in your new positions.

Renovations are going to begin this month in the MCN1 facility to accommodate specialized research equipment. PRB washroom renovation part 2 is tentatively set for October. We look forward to the new changes.

July was busy with our Semi Annual inspection with IACUC. All went well and we showed improvement since our last visit. We are also just finishing with our Annual USDA inspection and the 2017's first trimester will be time for our Triennial site visit with AAALAC. Everyone is busy, busy, busy!

Vanderbilt's DAC team is sending many members to represent us at the National Meeting this year in Charlotte. Many will be presenting posters, talks and lectures. We hope to see you there!

Everyone, please enjoy the beautiful change in seasons and stay safe over the holidays. We will catch up again in December!

Submitted by: Donna LeMay

Call for Nominations



American Association for Laboratory Animal Science

The Nominations Committee announces the call for nominations for 2017 Branch Officers and Board of Directors. Prior to nominating persons for these positions, please insure that they are active Branch members and they are willing to serve if elected. Nominate yourself if you are interested and would like to become more involved with your Branch of AALAS.

DEADLINE FOR NOMINATIONS IS OCTOBER 31, 2016

PRESIDENT-ELECT _____
(must be an AALAS national member)

SECRETARY / TREASURER _____
(must be an AALAS national member)

BOARD OF DIRECTORS – 2 candidates. This is a two year term for 2017-18. Wesley Fox and Jacqueline Dubuque will be rotating off the Board this year.

Send your nominations to:

Dana Gray
Vanderbilt University
DAC: AA-6206 MCN
1161 21st Ave.
Nashville, TN 37614-1704
dana.gray.appbranch@gmail.com

AALAS National News



AALAS 67th National Meeting
Charlotte, NC
October 30–November 3, 2016
Charlotte Convention Center

Meeting Features

■ Learning

Science, Techniques, Management, Animal Welfare, Ethics, Regulatory Compliance, Medicine Methodology, Facility Operations

■ Networking

Social Events, Technician Programs, Affiliate and District Meetings, Exhibit Hall

■ Recognition

Annual Awards (Griffin, Brewer, Garvey, Bhatt, Collins, Technician of the Year, Technician Publication, Poster Session), Foundation Donors, Opportunities to Present

■ Outreach

Local Schools Program, Public Outreach Training, Resources

DON'T MISS THE AALAS NATIONAL MEETING EXHIBIT HALL!

Approximately 300 companies (more than 650 booths) exhibit at the AALAS National Meeting. Exhibitors interact with people from the academic community, research institutions, government organizations, and commercial companies. Visit the Exhibitors section of nationalmeeting.aalas.org for a prospectus, a list of previous exhibitors, sponsorship opportunities, and other information.

RIBBON CUTTING CEREMONY	Monday, October 31, 8:30 a.m.
COMMERCIAL COMPANY BOOTHS	Learn about the latest products and services offered by vendors in the field.
AFFILIATE BOOTHS	Visit with our affiliate members and check out their public outreach and educational materials.
CYBER CAFÉ (sponsored by Transnetyx)	Monday: 8:30 a.m.–5:00 p.m. Tuesday: 9:00 a.m.–5:00 p.m. Wednesday: 9:00 a.m.–1:00 p.m.
REFRESHMENT BREAKS	Monday: 8:30 a.m.–10:30 a.m. (NEPCO) 1:00 p.m.–3:00 p.m. Sponsorship available Tuesday: 9:00 a.m.–11:00 a.m. (Priority One) 1:00 p.m.–3:00 p.m. Sponsorship available Wednesday: 9:00 a.m.–11:00 a.m. Sponsorship available
POSTER SESSIONS	Come view this year's poster sessions, and don't miss the Poster Reception on Tuesday from 2:00 p.m.–4:00 p.m. Meet the authors, enjoy some refreshments, and see who won this year's Poster Awards.

EXHIBIT HALL HOURS

Monday, October 31: 8:30 a.m.–5:00 p.m.

Tuesday, November 1: 9:00 a.m.–5:00 p.m.

Wednesday, November 2: 9:00 a.m.–1:00 p.m.

Puzzle Key

Match the animal and their characteristic

<u>D</u>	1) Rabbit
<u>G</u>	2) Hamster
<u>H</u>	3) Guinea pig
<u>A</u>	4) Ferret
<u>B</u>	5) Llama
<u>J</u>	6) Rat
<u>C</u>	7) Cow
<u>E</u>	8) Horse
<u>L</u>	9) Gerbil
<u>K</u>	10) Goat
<u>F</u>	11) Cat
<u>I</u>	12) Dog



- A) Scientific name means “stinky little mouse killer thief”
- B) Can be restrained in a kush position
- C) Can walk upstairs, but not downstairs
- D) Peg teeth
- E) Height is measured in “hands”
- F) Cannot taste sweetness
- G) Flank glands
- H) Rodent that has precocial young
- I) Prefer to excrete with the body being aligned along the North–South axis under calm magnetic field conditions
- J) Rodent that lacks gallbladder
- K) Are foragers, not grazers
- L) Thump their rear legs when excited or stressed

District 4 Meeting

2017 AALAS D4 MEETING

Decatur, GA

Dates: March 29, 2017 - March 31, 2017



Advancements in Laboratory Animal Science

To volunteer to speak, please email adryman@emory.edu
For more information head on over to our website at
<http://seaalas.wildapricot.org/2017-D4-Meeting>

District 4 Travel Award



Annual District IV Meeting Travel Award Application

Name:

Institution:

Address:

Phone:

Job Title:

Certification Level (if applicable) _____, Registered? ☐

Branch Membership (required) ☐ How Long? _____

Statement of Interest: Explain why you wish to attend and what you expect to gain or achieve in relation to your future career goals.

Attach a Letter of Recommendation from your supervisor including a statement that your institution will allow you to attend and indicate any portion of the expense they will cover (registration, travel, lodging, etc.).

Applications may be submitted by email or USPS. Deadline to apply is Oct. 31, 2016.

Mail To:

Dr. Greg Hanley
Awards Committee Chair
Div. Laboratory Animal Resources
East Tennessee State University
P.O. Box 70418
Johnson City, TN 37614-1704
email: hanley@etsu.edu

Two Thumbs Up



Congratulations!

Do you have someone who has achieved a goal, won an award, or deserves recognition? We want our members to hear about it!



Kendall Johnson




Lauren Rosa



None reported

The technician certification designations of ALAT, LAT, and LATG are widely known throughout the varied fields of laboratory animal care. They are universally becoming a requirement for a lab animal care position.

For complete program information, download the **Technician Certification Handbook** . The handbook contains everything you need to know about application and testing procedures, qualification criteria, exam fees, and many other topics, and should be retained for use as a reference during the application process.



Passing an AALAS certification exam at any level entitles you to one free year of membership in the [Appalachian Branch](http://www.appaalas.org) of AALAS. Attach a copy of your certificate to your membership application and send no monies.

TBR Corner

Hello everyone! Lots of things happening on the National level of AALAS! Everyone is preparing for the National convention happening October 30 thru Nov 3rd. There is so much to do and see! Even if you are not able to attend, there are still ways to be a part of the fun and show your support!



Just a few reminders that we welcome your input for the Colleague corner. Do you know a coworker you would like to recognize? Or maybe you would like to introduce yourself to the Branch? Let us do a feature spotlight and say hello! Just email me a name and email address and I will do the rest!

How about sharing some interesting tech tips? We are all looking for ways to work smarter!!!! Why not share with us!?! Need info about AALAS certification?....Submitting a nomination for an award?Want help with a talk topic or submission?....Need help navigating the Learning Library?....Interested in attending a National Meeting? Let me assist you with answers to these questions and more. I am your Branch representative and I am here to help you anyway I can. My email address is below and I am just a click away!

I have the latest info on AALAS topics for you below.

So stay tuned folks for some National AALAS news and keep in touch! Have an awesome Autumn!!!!

The AALAS Foundation is conducting an exciting and creatively challenging contest at the 2016 National Meeting - the "100 ALL STAR Race"!

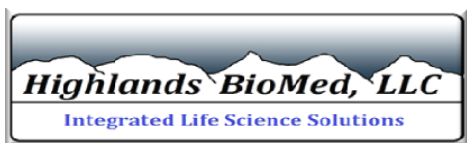
Fifty-two contestants are being challenged to paint/decorate a wooden 6" race car. The race cars receiving the most "votes" in their respective category, will be deemed their category winner. "Votes" are actually donations made to the AALAS Foundation on behalf of a race car entry. The "[100 ALL STAR Race](https://www.facebook.com/aalasfoundation/photos/?tab=album&album_id=1184347944957124)" [Facebook photo gallery](https://www.facebook.com/aalasfoundation/photos/?tab=album&album_id=1184347944957124) is now open - check out some of the creative entries and "like" your favorite ones! Check back often as more photos will be placed in the gallery, as they arrive. The photo entry receiving the most Facebook "likes" on our Facebook page will be awarded the "Facebook Fan Favorite" award. https://www.facebook.com/aalasfoundation/photos/?tab=album&album_id=1184347944957124

Online "voting" is set to begin October 3rd. Be on the lookout for an email announcing the official start of the race!

"Celebrate the Mouse" Lapel Pins & Souvenir Photos

The AALAS Foundation is excited to announce that this year we will be introducing a new "Celebrate the Mouse" lapel pin at the 2016 National Meeting. This year's pin will be celebrating mice (and other animals) for their contributions in heart disease research. Attendees of the 2016 National Meeting making a \$5.00 or more donation to the AALAS Foundation, at our booth in Charlotte, NC, will receive a "Celebrate the Mouse" lapel pin - a white mouse with its tail curled into the shape of a red heart disease awareness ribbon. Additionally, National Meeting attendees making a \$5.00 or more donation, at the Foundation booth, will receive a "Celebrate the Mouse" souvenir photo of themselves (with a choice of four background scenes) - courtesy of "Celebrate the Mouse" photo booth sponsor, Envigo.

Volunteers needed at the Foundation Booth! We still need a few more volunteers to help out at the AALAS Foundation booth at the National Meeting. If you've never volunteered before - you have no idea what fun you're missing! Volunteering in the Foundation booth is a great way to network while supporting the AALAS Foundation at the same time! Pick a date and time to volunteer that's convenient for you! Booth volunteers must be registered attendees of the 2016 AALAS National Meeting. Click here to sign up!!! <https://docs.google.com/spreadsheets/d/1-1KCp4YDI5ij6g5GpFoB0QarmIMr3h34firKqYkAiok/edit#gid=0>



WWW.HIGHLANDSBIOMED.COM

Cage Washers, Decon, Bedding Control, Autoclaves

Steve Blevins, BS, RLATG

Telephone: 423.677.8624

Email: steve@highlandsbiomed.com



Christine Reaves
Strategic Account Manager
Research Models and Services

Harlan Laboratories, Inc.

8520 Allison Pointe Blvd.
Suite 400
Indianapolis, IN 46250
Phone 919 237-1741
Mobile 919 455-7701
Fax 919 287-2382
creaves@harlan.com

www.harlan.com

Bio Serv

Delivering Solutions...

◆ Nutritional ◆ Enrichment ◆ Medicated ◆ Special Needs

Karen Froberg-Fejko
LATg, VMD

President

Phone: 800-996-9908 ext. 135

Email: kfroberg@bio-serv.com

800-996-9908
(US and Canada)

908-284-2155
(International)

Fax: 908-284-4753

3 Foster Lane, Suite 201
Flemington, NJ 08822

ISO 9001:2008 Certified

www.bio-serv.com



Lab Bedding Products

Andrea Gay
Regional Sales Manager
International Sales

(269) 623-8078 Office

(269) 567-0146 Cell

(269) 623-8075 Fax

P.O. Box 86
Plainwell, MI 49080

andrea_gay@andersonsinc.com
www.andersonslabbedding.com



Donald M. Basil
President

LYNX Product Group, LLC
650 Lake Street
Wilson, NY 14172

**Washing
and
decontamination
systems**

Phone: (716) 751-3100

Cell: (716) 830-1489

Fax: (716) 751-3101

E-Mail: donbasil@lynxpg.com

TECNIPLAST

Jon LEDFORD
regional sales director

Cell 484 798 7687 • E-Mail: jledford@tecniplastusa.com

Tecniplast USA
PO Box 1209
West Chester, PA 19380
Toll Free 877 669 2243
Fax 484 875 0511
www.tecniplastusa.com



BIORESOURCES

Pam Huber
Customer Service Manager

Marshall BioResources
5800 Lake Bluff Road, North Rose, NY 14516 U.S.A.

Phone: 315.587.2295 Fax: 315.587.2109

phuber@marshallbio.com

www.marshallbioresources.com

Ancare

Better Products. Better Science.

Nancy McCormick
Regional Sales Manager

484.593.0730

nancy@ancare.com

800.645.6379

www.ancare.com

Individual membership

Appalachian Branch American Association for Laboratory Animal Science INDIVIDUAL MEMBERSHIP APPLICATION

Annual dues include a quarterly newsletter subscription and free registration to Branch meetings. Check one:

Individual Membership: \$15.00/year _____ **Student** Membership: \$10.00/year _____

Institutional Membership: \$150.00/year _____

for 12 persons, attach correspondence information (as below) for each member

Complimentary: Have you passed an AALAS Certification exam at any level this year? Then you get one free year of membership, compliments of the Appalachian Branch. Attach a copy of your certificate to this form and send no money.

ALL MEMBERSHIP CATEGORIES: Please complete the information below for correspondence.

Name: _____

Company/Institution: _____

Title: _____

Address 1: _____

Address 2: _____

City, State, Zip: _____

Phone: _____ Fax: _____

E mail: _____

National AALAS Member? _____ Certification Level: _____ Registry Participant? _____

DEADLINE for listing in the annual directory is February 28 Please return a copy of this application and a check payable to The Appalachian Branch AALAS, to:

**Dana Gray
PO Box 1877
Mt. Juliet, TN 37121**

Membership is easy!

The Appalachian Branch of AALAS is a not-for-profit educational 501(c)3 association, chartered under the laws of the State of Tennessee. The Appalachian Branch is affiliated with the American Association for Laboratory Animal Science (AALAS™) and is one of five Branches in AALAS District IV. We are dedicated to the advancement of laboratory animal science primarily through education, training, and information exchange. The ultimate goal being the improvement of both human and animal health. In concert with this aim is the enhancement and development of the careers of our technicians, and recognizing their achievement via our awards program.

The Appalachian Branch of AALAS has several individual, institutional, and commercial members nationwide. We are geographically located in middle and east Tennessee, covering Nashville to Knoxville, and the Tri-Cities.

Membership is not regionally restricted and anyone professionally involved with the production, care, and study of laboratory animals is welcome to join.

You'll find both the individual membership and the corporate membership applications in this newsletter or [on our web pages](http://www.appaalas.org). Come and join us, you'll be glad you did!

Commercial Membership

Appalachian Branch American Association for Laboratory Animal Science COMMERCIAL MEMBERSHIP APPLICATION

Commercial Membership: For two representatives including business cards for each in the quarterly newsletter, web page links to your company and email links to your representatives. Please email digital business cards to the [Newsletter Editor](#) or enclose original business cards with this application. _____ \$75.00

Additional Newsletter Advertising Options

Newsletter Print Ads				Digital ads are preferred and may be emailed to the Newsletter Editor or include your hard copy advertisement with this application. Specify the preferred month for one-issue ads: __ March, __ June, __ September, __ December
Pages	One Issue		Four Issues	
1/4 page	\$25.00		\$80.00	
1/2 page	\$50.00		\$175.00	
Full page	\$100.00		\$350.00	

TOTAL ENCLOSED _____ **Thank You for Your Support!**

Please complete the sales representative information below for correspondence.

Name: _____
Company: _____
Title: _____
Address: _____
City, State, Zip _____
Phone: _____ Fax: _____
E-mail: _____

Name: _____
Company: _____
Title: _____
Address: _____
City, State, Zip _____
Phone: _____ Fax: _____
E-mail: _____

DEADLINE for listing in the annual directory is February 28. Please return a copy of this application and a check payable to The Appalachian Branch of AALAS to:

Dana Gray
P.O. Box 1877
Mt. Juliet, TN 37121

If you pay via PayPal, you may email a copy of this application to Dana.Gray.AppBranch@gmail.com.



tick@lab - Regulatory Compliant Software for
Animal Research Facilities



IACUC
Protocol Management
Capacity Planning
Vet Records
Breeding
...and much more

a-tune software Inc.
3000 Joe DiMaggio Blvd
Suite 57
Round Rock, TX 78665

T: (512) 243-8539
www.a-tune.com



PRL **pharmaceutical**
RESEARCH LABORATORIES, INC.

Kevin Cormier
South East—Sales Representative

Phone: (800) 243-5350
(203) 755-4908
Fax: (203) 755-4309
PO Box 369
Naugatuck, CT 06770

kcormier@pharmaceutical.com

Get the highest cage density per square foot through our unique carousel rack design.



There is no need to
move racks or waste
space with large
aisles; the carousel
rotates, providing
easy access to all
cages.

- Patented motor-free exhaust technology. No noise, vibration or air turbulence.
- Containment - Prevent the release of allergens, odors and infectious agents.
- Isolation - Prevent environmental and biological cross-contamination.



The most stable micro-environment to help reduce the number of scientific variables.



Animal Care | *Systems*

www.animalcaresystems.com 1.888.827.3861

TBR Corner (...continued)

Live Auction and Appreciation Reception!

The AALAS Foundation will be holding its annual Silent & Live Auction at the 67th annual AALAS National Meeting in Charlotte, NC. Proceeds from this fun-filled event support the Foundation's efforts to educate the public about the important role of animals in biomedical research AND increase public awareness of the compassionate professionals working in laboratory animal science.

It's not too late to make a donation to support this event. Click [here](#) to make an auction item donation pledge, or for more information.

All auction items must be received by the AALAS Foundation by October 1st in order to be shipped to the National Meeting. Alternatively, you may bring your auction donations directly to the Foundation booth in Charlotte, North Carolina.

Mail auction items to:

AALAS Foundation

Attn: 2016 Auction

9190 Crestwyn Hills Drive

Memphis, TN 38125

Conduct an outreach event in your community! AALAS can help! Don't forget - we have FREE handout materials to help make your outreach events a success - posters, brochures, fun origami mice and frogs! Help us "Celebrate the Mouse" and other animals for their contributions in biomedical research! Conduct an outreach event in your local community! We have a free "Celebrate the Mouse" Power Point presentation available to help you inform the public about how mice have helped make strides in breast cancer research! Email foundation@aalas.org for questions/details.

Upcoming Webinars!!!

Perspectives on Unalleviated Pain and Distress

September 27, 2016 | 12:00-1:30 p.m. CT

Building a Zebrafish Health Monitoring Program

October 4, 2016 | 12:00 PM - 1:30 PM CT

Check them out at the AALAS store for more details!

Also Check out the 7th Edition of the [Laboratory Animal Regulatory Workbook, 7th Edition](#).

This workbook is designed to assist those who are learning about laboratory animal science and the regulations and guidelines that help provide for the humane care and use of laboratory animals. This workbook can help technicians prepare for the AALAS technician certification examinations and managers prepare for the Animal Resources examination. It may also be helpful when studying for other examinations related to the laboratory animal science field.

Below is the Link for more information about the National Meeting in Charlotte! Please check it out!

<https://www.aalas.org/national-meeting#.V-APIPkRJOI>

Take care everyone and feel free to contact me anytime!

Donna.M.Lemay@vanderbilt.edu

Your *Technician Branch Representative (TBR)* serves as the connection between lab animal technicians and national AALAS. The TBR is the voice of the technician community!

Your TBR can help you to share your ideas or suggestions, promote research, help you to become more involved in AALAS (local and national), or help you find answers to questions you may have.

Travel Award Winner



This year two individuals in the branch were voted to receive the National AALAS Annual Meeting Travel Award: Allen Carpenter and Dana Gray (in the picture to the left with Dr. Greg Hanley accepting the travel award).

They will write an article for the December Branch Newsletter or do a platform session at the Branch Winter Meeting about what they learned, their impressions of the meeting, and what they gained by attending.

National AALAS Annual meeting TRAVEL AWARD

The amount of the award is determined annually by the Branch Board of Directors (\$1,000 for 2016). The award is designed for Branch members who normally would not have the opportunity to attend the [Annual National AALAS Meeting](#), not for those in any position where travel would be supported by their institution. This is an excellent opportunity for those members who desire to broaden their experience and participation in AALAS.



Animal Care | Systems

Rich VanDewater
Director of Sales

Phone 720.283.0177
Fax 720.283.0179
Toll Free 1.888.827.3861
Cell 303.249.7930

7086 S. Revere Parkway
Centennial, CO 80112

rvandewater@animalcaresystems.com
www.animalcaresystems.com

News & Views

Appalachian Branch

Section Contributors:

Steve Blevins
Chris Carter
Patti Coan
Jennie Hoard
Donna LeMay
Yolanda Perez
Erin Yu



Animal Care | Systems

John Park
Manager of Business Development
South Central US & Mexico

Office: 832.529.4118
Cell: 979.595.3674

7086 S. Revere Parkway
Centennial, CO 80112
Toll Free: 1.888.827.3861
Fax: 720.283.0179

jpark@animalcaresystems.com
www.animalcaresystems.com