



News & Views

Appalachian Branch
American Association for Laboratory Animal Science

2016 Summer Meeting



FRIDAY, AUGUST 12, 2016 / HOSTED BY THE UNIVERSITY OF TENNESSEE, KNOXVILLE

Appalachian Branch in Search for a new

LOGO

Grand Prize:

\$250 CASH PLUS
(2) \$25 GIFT CERTIFICATES
FOR THE AALAS STORE.

Submission Deadline:

JULY 31, 2016

Criteria/Guidelines:

[HTTP://WWW.APPAALAS.ORG](http://www.appaalas.org)

See Page 9 for more
information

News & Views

Appalachian Branch
American Association for Laboratory Animal Science

Officers

President:

Patti Coan, DVM, PhD, DACLAM
University of Tennessee
865 974-5634
pcoan@utk.edu

President– Elect:

Patty Chen, DVM
Vanderbilt University
615-322-2231
patty.chen@vanderbilt.edu

Past-President:

Jeremy Parker, MS, CMAR, RLATG
Vanderbilt University
615-322-2231
jeremy.m.parker@vanderbilt.edu

Secretary/Treasurer:

Dana Gray, RLAT
dana.gray.appbranch@gmail.com

Board of Directors

Wesley Fox, BS, LATG
Vanderbilt University
615-322-7295

andrew.w.fox@vanderbilt.edu

Wes Adams
University of Tennessee
865-974-6763
wadams14@utk.edu

Phillip Sullivan, MS, LVMT, RLATG
Vanderbilt University
615-322-2231
phillip.n.sullivan@vanderbilt.edu

Technician Branch Rep.

Donna LeMay, RLAT
Vanderbilt University
615-322-2231
donna.m.lemay@vanderbilt.edu

Webmaster:

Steve Blevins, BS, RLATG
Highlands BioMed, LLC
423-677-8624
steve@highlandsbiomed.com

Newsletter Editor:

Yolanda Perez, MSA
Vanderbilt University
(615) 343-3591
yolanda.perez@vanderbilt.edu

Contact us via email: info@appalas.org

contents

In every issue

| | |
|--------------------|--------|
| TBR Corner | 20, 25 |
| In the News | 7 |
| Calendar of Events | 3 |
| Facility News | 14, 15 |
| Two Thumbs Up | 19 |
| Puzzle Zone | 12, 17 |
| Amazing Science | 13 |



In this issue

| | |
|----------------------------|------|
| From the Editor | 3 |
| 2016 Branch Summer Meeting | 5, 6 |
| Logo Contest | 9 |
| AALAS National News | 16 |
| Colleague Corner | 26 |
| District 4 Meeting | 18 |

Membership

| | |
|-----------------------|----|
| Individual Membership | 22 |
| Commercial Membership | 23 |



From the Editor

Everyone hears about that person who is “in the right place at the right time.”

In her article “7 Habits That Make Great Opportunities Happen”, Liz Strauss assures that “It’s not fate or a great gene pool. It’s not an accident. It’s not even a lucky star. People who enjoy consistent success know what it takes to make great opportunities happen.”

Our summer newsletter is packed with opportunities. The Appalachian Branch Summer Meeting will be held on Friday, August 12, 2016 in Knoxville. A great opportunity to learn, interact and share

information with our colleagues.

You also have the opportunity to participate in our logo contest. The logo is the key visual component of our branch identity. The grand prize is \$250 cash and \$50 gift certificates for the AALAS store!

In the TBR Corner, Donna talks about other great opportunities like entering a contest to have your pet photo featured in the LASPro magazine, participating in the AALAS Foundation 100 All Star Race, getting ready for the AALAS certification or attending the 67th AALAS National Meeting.

Last, but not least, you also have the opportunity to participate as a contributor for our newsletter. Please email me at volanda.perez@vanderbilt.edu to get your article published in our next issue.

“Today is not just another day. It’s a new opportunity, another chance, a new beginning. Embrace it.”
- Unknown.



Calendar of Events

June 2016

- | | |
|-------|-----------------------------------|
| 1— 30 | AALAS National Election Open |
| 19 | Father’s Day |
| 27—30 | Charles River Short Course on LAS |

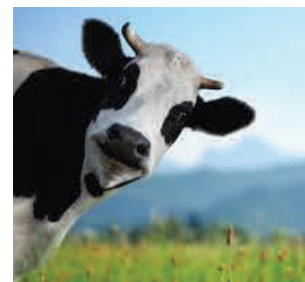


July 2016

- | | |
|----|----------------------------------|
| 4 | Independence Day |
| 14 | Cow Appreciation Day |
| 31 | Logo Contest Submission Deadline |

August 2016

- | | |
|-----|-----------------------|
| 5—8 | AVMA Annual Meeting |
| 12 | Branch Summer Meeting |





PMI® LABDIET®

LABORATORY ANIMAL CARE COURSE

Receive your Laboratory Animal Care Course certification in a convenient NEW online format! This internationally recognized course is designed for everyone working with small animals – from new employees to those advancing to the ALAT.

Visit www.pmi-lacc.com to efficiently learn the core principles of laboratory animal care!

- Includes 6 lessons
- Work at your own pace
- Grades reported immediately
- Certificate issued upon successful completion of the course
- Online payments accepted
- Total cost of enrollment is \$50



TO ENROLL:
Visit www.pmi-lacc.com today!

FOR MORE INFORMATION:
Contact Tricia Lutman - 636.742.6295
Or info@labdiet.com

www.pmi-lacc.com

THE ANDERSONS BEDDING SYSTEM™



Enrich-o'Cobs®
PREMIUM BLENDED
ENRICHMENT BEDDING



Enrich-n'Nest™
THE ULTIMATE
ENRICHMENT



Crink-I'Nest®
HIGH QUALITY
NESTING MATERIAL



- Reduce Rodent Stress
- Improve Animal Welfare
- Improve Accuracy of Study Results
- Increase Efficiencies in the Lab

P.O. Box 119 Maumee, Ohio 43537 | 1-866-234-0505, Ext. 6511
AndersonsLabBedding.com

The Andersons®
LAB BEDDING PRODUCTS



Research Models & Services

Contact your Harlan representative for Research Models & Services and Teklad Diets, Bedding, and Enrichment needs.

Christine Reaves
919-455-7701
creaves@harlan.com

harlan®
www.harlan.com
800-793-7287

© 2014 Harlan Laboratories, Inc.
Harlan and the Harlan logo are trademarks of Harlan Laboratories, Inc.

GENETIC STABILITY CONSISTENT PERFORMANCE & DATA REPRODUCIBILITY

JAX safeguards your research data ensuring it is reliable, repeatable and reproducible. Through rigorous refreshing of foundation stocks, JAX Genetic Stability Program effectively limits cumulative genetic drift so your data can last for generations to come.

To learn more
contact your JAX regional
representative, [Ella Torian](mailto:ella.torian@jax.org)

1-207-266-8685
ella.torian@jax.org

 **The Jackson
Laboratory**



APPALACHIAN BRANCH AALAS

Summer 2016 Meeting Friday, August 12, 2016

The theme this year for the summer meeting will be agriculture: specifically cows.

We will start the day off with a host of guest speakers followed by a burger bar and a few more speakers. We will complete the day with a tour of the Little River Dairy.

Registration and agenda information will follow soon.



Hosted by the University of Tennessee, Knoxville

**PLEASE KEEP A COPY OF YOUR REGISTRATION FORM
TO REFER BACK TO DIRECTIONS, PARKING AND ENTRANCE INSTRUCTIONS!!**



**Summer Quarter Meeting
University of Tennessee Knoxville
Knoxville, TN 37996
Friday, August 12, 2016
10:00 am-3:30 pm EST**

Theme is Cows!

Pre-Registration

_____ I will have lunch (free for Branch members).

_____ I will be attending the lectures only.

Name _____

Institution _____

Phone _____

E-mail _____

Please scan, fax or e-mail your pre-registration no later than **August 7th** to:

clcarter@utk.edu

865-974-5634 (o)

865-974-5649 (f)

Driving Directions to the Agricultural Campus...

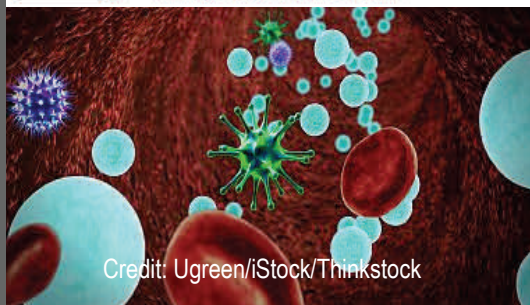
From McGhee Tyson Airport

- Follow U.S. 129 (Alcoa Highway) north to Knoxville.
- Take Neyland Drive exit and turn left onto Neyland Drive.
- Turn left at next traffic light onto Joe Johnson Drive on the Agriculture Campus (Agriculture Campus sign on right).
- Take a left onto River Drive.
- Park in Lot CFN1 on left of River Drive.
- Parking Permits will be available at check-in; Plant Biotech.

From Nashville

- Follow I-40 to Exit 386.
- Exit onto U.S. 129 (Alcoa Highway) south (toward Airport and Smokies).
- Take the Neyland Drive exit and turn left onto Neyland Drive.
- Turn left at next traffic light onto Joe Johnson Drive on the Agriculture Campus (Agriculture Campus sign on right).
- Take a left onto River Drive.
- Park in Lot CFN1 on left of River Drive.
- Parking Permits will be available at check-in; Plant Biotech.

In the News



Credit: Ugreen/Stock/Thinkstock

Drug might help treat sepsis

By: NIH Research Matters: Tianna Hicklin, PhD Published: May 17, 2016

Sepsis is a life-threatening condition in which the body launches a massive immune response to an infection. It can be triggered by different types of microbes (such as viruses and bacteria). A team of scientists led by Dr. Ivan Marazzi at the Icahn School of Medicine at Mount Sinai investigated antimicrobial gene activation during infection to better understand the body's immune response to microbes.



Modeling Disease-fighting Drugs to Reduce Number of Animals Needed in Research

By: Anne Ju Manning, Colorado State University; Published: June 9, 2016

In treating diseases with drugs, dosing is critical; too little is ineffective, while too much can be lethal. Colorado State University's Brad Reisfeld takes a mathematical approach to achieving optimal dosing for various drugs. The researchers developed what is called a physiologically-based pharmacokinetic model to predict time-course, tissue-specific concentrations in the body of rifapentine and one of its active metabolites. To inform the model, the researchers used typical administration schedules for the drug.



Zika Virus Vaccine Possible With Help of Primate Research

By: Liz Alverson, Published: May 16, 2016

Scientists discovered the Zika virus in Africa in the 1940s. Until recently, it was not considered a major public health threat. Consequently, little research had been conducted into the virus. That's about to change, largely through research involving animal models — including primates. Animal research is behind virtually every medical treatment in existence. And we have all been the beneficiaries.

LabDiet

Your work is worth it.

George Nugent

DIRECTOR



P.O. Box 19798 | St. Louis, MO 63144

PHONE: 636-742-6294 | MOBILE: 314-422-2867 | FAX: 636-742-6166

EMAIL: George.Nugent@PurinaLabDiet.com | WEB: LabDiet.com

LabDiet® is a registered trademark of PMI Nutrition International, LLC.

Allentown

Scott A. Hoy

District Sales Manager

Allentown, Inc.

165 Route 526

Allentown, NJ 08501

Home Office: 804-639-2762

Corp. Office: 800-762-2243

Cell: 609-273-5520

shoy@AllentownInc.com

www.AllentownInc.com

Allentown, Inc. | Allentown Europe | Allentown France | Allentown Deutschland | Allentown Italia

Bio Serv

Delivering Solutions™

♦ Nutritional ♦ Enrichment ♦ Medicated ♦ Special Needs

ISO 9001:2008 Certified

Ph: 800-996-9908

Fax: 908-996-4123

www.bio-serv.com

Karena Thek, MBA, CMAR

National Sales Manager

Cell: 908-255-9145

Fax: 610-381-4088

Email: kthek@bio-serv.com

TECNIPLAST

Robert TYRRELL

client representative

Cell 484 798 3205 • E-Mail: rtyrrell@tecniplastusa.com

Tecniplast USA
PO Box 1209
West Chester, PA 19380
Toll Free 877 669 2243
Fax 484 875 0511
www.tecniplastusa.com

The Jackson Laboratory

Ella Torian

Opportunity Development Manager

ella.torian@jax.org

207.288.1404 t

207.266.8685 m

610 Main Street
Bar Harbor, ME 04609

www.jax.org

charles river

every step
of the way.

LORIE BOYD, B.S., LATG

Regional Manager

251 Ballardvale Street, Wilmington, MA 01887

Direct: 781.222.7087 • Mobile: 919.723.8356

lorie.boyd@crl.com • www.criver.com

Edstrom

ISO 9001:2008 Certified

Arnie Markwald

North American Sales Manager

arnie.markwald@edstrom.com

800 558 5913

262 492 7258 Cell

262 534 5181 ext 255

262 534 5184 Fax

819 Bakke Avenue
Waterford WI 53185
www.edstrom.com

harlan®

Helping you
do research better

Jim Cole

Region Sales Manager, Southeast
Research Models and Services

Harlan Laboratories, Inc.

8520 Allison Pointe Blvd.

Suite 400

Indianapolis, IN 46250

Phone 410 529-2886

Mobile 443 416-8660

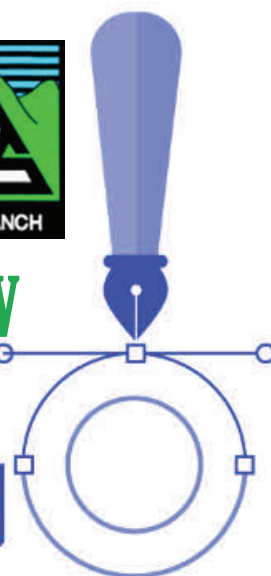
Fax 317 806-6068

jcole@harlan.com

www.harlan.com

President's Club Member

Appalachian Branch in Search for a new LOG



Grand Prize:
\$250 CASH PLUS
(2) \$25 GIFT CERTIFICATES
FOR THE AALAS STORE.

Submission Deadline:
JULY 31, 2016

**Click HERE
for details**



Research Triangle Branch
American Association for
Laboratory Animal Science



OKLAHOMA AALAS
American Association for Laboratory Animal Science



Palms to Pines Branch
American Association for Laboratory Animal Science



Introducing NexGen Rat 1800

A World of Value Inside.



A Room with a View.

The forward portion of the 1800 cage, and also its corresponding wire bar lid, allow for a clear and unobstructed view both into and out of the cage! This provides researchers with an improved ability to perform quick and effective health checks, while - in equally important fashion - provides rats with a vantage point into what is occurring outside of the cage and within the room beyond; a key health and enrichment factor in the overall well-being of the animals.



A Step in the Right Direction.

Variety within their environment, as well as the animals' ability to have a degree of control over it, is also a key factor in the well-being of research animals. The 1800 can accommodate an optional platform in the front of the cage that allows rats to engage in important enrichment activities such as climbing and exploration.



Time to Make a Stand.

The Guide for the Care and Use of Laboratory Animals, as well as other generally-accepted global standards, mandates that research animals should be able to engage in normal postures and activities. For rats, the ability to comfortably obtain a bi-pedal stance is something that has been shown to be beneficial to their overall well-being. The 1800 is a much larger and taller cage with a floor to ceiling height of 10" / 25.4cm, allowing rats to easily achieve this bi-pedal posture.



Register for a free webinar on the NexGen Rat 1800 at www.AllentownInc.com/rat1800.





ISO 9001:2008 Certified

Carmen Costa
Sales Consultant

800 558 5913
Cell 704 675 1299
Fax 262 534 5184

carmen.costa@edstrom.com

819 Bakke Avenue
Waterford WI 53185
www.edstrom.com



IACUC, Facility and Breeding Colony Software

J. Patrick Guider Jr.
General Manager

phone +1 (512) 243 8539
mobile +1 (512) 589 5431
skype pat.guid1
pguider@a-tune.com

a-tune software Inc.
3000 Joe DiMaggio Blvd.
Suite 57 • Round Rock, TX 78665
USA

www.a-tune.com



John L. Tonkinson, Ph.D.

Director, North American Opportunity
Development

john.tonkinson@jax.org

207.664.4684 t

610 Main Street
Bar Harbor, ME 04609

www.jax.org

THOREN
CAGING SYSTEMS

Andy Minenna
International Sales Manager

Over 60 Years of Innovation
Quality - Performance

815 West Seventh Street
Hazleton, PA 18201
phone: 570.455.5041 ext. 206

Mobile: 732.310.5432
Fax: 570.454.3500
andym@thoren.com
www.thoren.com

Validated Delivery Solutions

Call Center: 877-355-3773

Eric A. Syversen

VP, Animal Transportation

P: 443-878-5514

F: 877-854-1451

E: eric@vcgrc.com

www.validatedcourier.com

**VALIDATED
DELIVERY SOLUTIONS**

Research Animal Delivery Done Right and At the Right Price

LabDiet

Your work is worth it.

Kristin Robertson, MS

ACCOUNT MANAGER

P.O. Box 450190 | Sunrise, FL 33345

MOBILE: 954-393-7500

EMAIL: KERobertson@landolakes.com | WEB: LabDiet.com

LabDiet® is a registered trademark of PMI Nutrition International, LLC.



Warren Riley
Sr. Account Representative, MW
warren@innoviveinc.com

Innovive Inc
Indianapolis, IN

M (317) 501-4341
D (858) 309-6653
F (858) 309-6621



Britz & Company

Bio-Containment
Animal Housing
Britz Design

Enriching the Lives
of Animals and Humans

Julie Worthington
Sales Manager

Phone: 307-322-4040

Fax: 307-322-4141

sales@BritzCo.com
www.BritzCo.com

PO Box 1179 • 1302 9th Street
Wheatland, WY 82201

Puzzle Zone

Quiz Cow



1— A female bovine that has not had a calf is called a _____.

- a) Holstein b) Heifer c) Jersey d) Stear

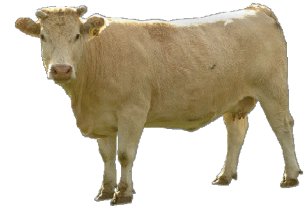
2—How many stomach compartments does the cow have?

3—What was fed to cows which spread the “mad cow disease”

- a) Peanut Butter b) Spinach
c) Cattle & sheep bone meal protein d) Insects

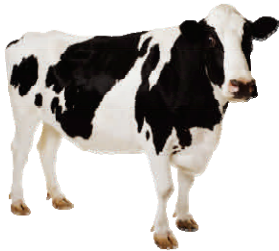
4—In which year were cows brought to Jamestown, VA

- a) 1824 b) 1751 c) 1992 d) 1611



5—Can Cows see color? **Yes/No**

6—What is the genus and species of the cow?



7—What breed of cow produces the most milk?

- a) Holstein b) Jersey c) Devon d) Ayrshire

8—How long is the average life span of the coww

- a) 30yrs b) 15yrs c) 25yrs d) 5yrs

9—The best way to determine the age of a cow is by counting the number of rings on its horns

True/False

10—Which state has the most beef cows?



Amazing Science



(Credit: Spencer Platt/Getty Images)

How Exercise May Help the Brain Grow Stronger

By: Gretchen Reynolds; The New York Times; Published: June 15, 2016

A report in the journal *eLife* found that strenuous exercise influences gene expression in the brain of mice, boosting production of brain-derived neurotrophic factor, which is believed to have a protective effect. In a separate study, older mice injected with the hormone osteocalcin ran as far as younger mice and outran untreated older mice twofold, and the team also found that physical activity naturally boosts osteocalcin. Researchers hope the findings, published in *Cell Metabolism*, could be harnessed to help improve muscle function in aging humans.



(Credit: Gerard Launet/Getty Images)

How Cellphones Might Be Messing With Our Sleep

By: Amy Middleton; Cosmos; Published: June 10, 2016

UK researchers found that exposure to colored light before bed might affect the speed at which sleep comes, as well as stress hormone levels. They looked at mice, finding that those exposed to blue light took the longest to fall asleep, compared with other types of light, but in those lacking the pigment melanopsin, mice exposed to blue light fell asleep fastest. In addition, exposure to all types of colored light tested was linked to higher levels of corticosterone, the team reports in *PLOS Biology*, but mice lacking melanopsin had low levels of the hormone.



(Credit: Scott Tysick/Getty Images)

Scientists Say They Hope to Create A Human Genome In The Lab

By: Rob Stein; Nashville Public Radio; Published: June 2, 2016

A synthetic version of the human genetic blueprint might be used for a wide range of medical research, scientists say. But it's far from reality, and comes with big ethical and safety questions. A group of scientists say they want to work toward being able to create a synthetic version of the entire human genetic code in the laboratory. Their hope is that a complete set of synthetic human DNA, known as a genome, could someday lead to important medical breakthroughs.

Facility News



Hello! We are pleased to announce that our basement construction has ended and we are able to house our ever-growing rodent population at this facility again.

Our dog and cat population has also grown over the last few months. We have almost twenty new cats and have been working hard to spend time with them and socialize them. They are doing really well; some of them have the most fantastic personalities. Most of our older cats have gone to live at their new homes, but we still have a few more up for adoption. Eight beagles recently arrived to stay with us; we hope to start adopting out some of our older beagles later this year.

We are very pleased to have a first year vet student join our team for the summer. Kiki has already been a tremendous help and she is loving the experience of working with the dogs and cats, as most of her experience thus far has been with large animal.

We had our IACUC inspection last month which went well.

Our AAALAC inspection is scheduled for later this month, so we are thrilled to have the extra hand to help us prepare for this.

Submitted by: Lauren Rosa



No update.



Things have been very busy in DLAR as we prep for our AAALAC site visit later this month.

We have been working hard scrubbing and polishing and making sure that everything is in order! It is also the end of the fiscal year for the University, so things are busy as we make that transition as well.

We have been able to hire Morgan Lawson as a full-time temporary employee through the summer to help out as we get ready for the site visit and afterward while others take summer vacations. Morgan has worked part-time in our department for a couple of years, so she was able to hit the ground running.

Lastly, you will notice some major changes to the face of ETSU's main campus if you travel through right now.

The official groundbreaking for the new football stadium occurred late last year, but the work has become very visible now. Several facilities have been relocated and the land is now being graded near the Basler Center for Physical Activity.

Have a great summer....I'm headed back to my cleaning!

Submitted By: Jennie Hoard

Facility News



Summertime is here at Vanderbilt University Medical Center and we have lots of things happening.

We would like to welcome new members to our team with the Division of Animal Care. Our new animal care technicians are Elise Jones, Caroline Spencer and Chris Ricci. Dr. Lauren Himmel has joined the TPSR team as our newest veterinary pathologist. Congratulations are in order as well for many. Dr Carissa Jones is completing her Vet Residency program at the end of June and will begin her new job as one of our staff veterinarians. Dr. Troy Apple will transition to the Office of Animal Welfare Assurance and become a veterinary reviewer. We will miss seeing him on a regular basis with the animals but we are grateful he will not be far away. Also transitioning to our veterinary staff will be Kendall Johnson. She was working as an animal care tech and will now work with us as a veterinary technician. We are excited for all of you! We would also like to welcome Dr. Amanda Derbyshire who will be joining our two year Veterinary residency program in July 2016.

Dr. Yasin Kokoye is leaving us at the end of June. Thank you for everything you have done for the Appalachian Branch of AALAS and for all of your amazing contributions to Vanderbilt. We wish you well in your future endeavors and you will be missed dearly by us all! Also leaving us is Tracey Street, one of our administrative assistants. She is transferring within Vanderbilt to another department. We hope to see you on campus!

Congratulations are in order for Michael Dudley

as he completed his associate degree in healthcare management and Atef Khalil, who passed the North American Veterinary licensing exam. You can read more about Atef in our Colleague corner section of the newsletter, please check it out.

Vanderbilt just began hosting their famous Farmers Market at our main courtyard outside. Every Thursday afternoon, vendors from around Nashville bring beautiful flowers, veggies and awesome products to sell. It will be available each week until October.

The Preston Research Building has completed the floor renovation project and is gearing up for the Washroom Renovation - part 2. We hope to start the project in the fall of 2016. It will consist of the Renovation of the "Clean side", a new bedding dispenser and a new bottle filling station. We will keep you updated on our progress.

We would like to thank Dr. Kelli Boyd for allowing the Animal Care and Use Program to host our picnic at her beautiful farm. This years' theme was a Luau! It was a grand time!



Stay cool everyone as we head into summer! We look forward to seeing everyone at the summer meeting in Knoxville!!!

Submitted by: Donna LeMay

AALAS National News



AALAS National Meeting

Charlotte, NC • October 30–November 3, 2016 • www.aalas.org

AALAS is an association of professionals that advances responsible care and use of laboratory animals to benefit people and animals.

The AALAS National Meeting is the largest gathering in the world of professionals concerned with the production, care, and use of laboratory animals. Each fall since 1950, the American Association for Laboratory Animal Science has held its annual National Meeting. The program is designed to have topics relevant to the entire laboratory animal science field.

Meeting Features

■ Learning

Science, Techniques, Management, Animal Welfare, Ethics, Regulatory Compliance, Medicine Methodology, Facility Operations

■ Networking

Social Events, Technician Programs, Affiliate and District Meetings, Exhibit Hall

■ Recognition

Annual Awards (Griffin, Brewer, Garvey, Bhatt, Collins, Technician of the Year, Technician Publication, Poster Session), Foundation Donors, Opportunities to Present

■ Outreach

Local Schools Program, Public Outreach Training, Resources



Attendees/Presenters

AALAS' National Meeting includes about 300 educational sessions and posters covering a wide range of topics designed to keep attendees on the leading edge of their field. Sessions take the form of panel discussions, posters, seminars, special topic lectures, technical trade presentations, and workshops. For information on submitting an abstract or topic suggestion, access the Call for Abstracts and Topic Submissions on the aalas website. Advance registration forms, housing information, and the program are also accessible online, as they become available.



Exhibitors

Approximately 300 companies, totaling more than 650 booths, exhibit at the AALAS National Meeting. Exhibitors interact with people from the academic community, research institutions, government organizations, and commercial companies. Visit the Exhibitors section of the AALAS website for a prospectus, a list of previous exhibitors, sponsorship opportunities, and other information.



Puzzle Key

Quiz Cow Answers



1— A female bovine that has not had a calf is called a _____.

a) Holstein

b) Heifer

c) Jersey

d) Stear

2—How many stomach compartments does the cow have?

4

3—What was fed to cows which spread the “mad cow disease”

a) Peanut Butter

b) Spinach

c) Cattle & sheep bone meal protein

d) Insects

4—In which year were cows brought to Jamestown, VA

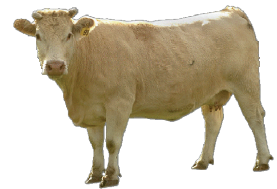
a) 1824

b) 1751

c) 1992

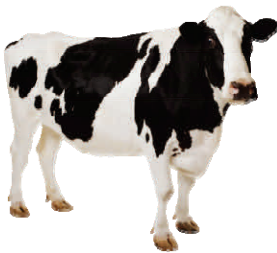
d) 1611

5—Can Cows see color? **Yes**/No



6—What is the genus and species of the cow?

Bos taurus



7—What breed of cow produces the most milk?

a) Holstein

b) Jersey

c) Devon

d) Ayrshire

8—How long is the average life span of the cow?

a) 30yrs

b) 15yrs

c) 25yrs

d) 5yrs

9—The best way to determine the age of a cow is by counting the number of rings on its horns

True **False**

10—Which state has the most beef cows?

Texas



District 4 Meeting

2017 AALAS D4 MEETING

Decatur, GA

Dates: March 29, 2017 - March 31, 2017



Advancements in Laboratory Animal Science

To volunteer to speak, please email adryman@emory.edu
For more information head on over to our website at
<http://seaalas.wildapricot.org/2017-D4-Meeting>

Two Thumbs Up



Congratulations!

Do you have someone who has achieved a goal, won an award, or deserves recognition? We want our members to hear about it!



Lisa Stansbury




None reported



None reported

The technician certification designations of ALAT, LAT, and LATG are widely known throughout the varied fields of laboratory animal care. They are universally becoming a requirement for a lab animal care position.

For complete program information, download the **Technician Certification Handbook** . The handbook contains everything you need to know about application and testing procedures, qualification criteria, exam fees, and many other topics, and should be retained for use as a reference during the application process.



Passing an AALAS certification exam at any level entitles you to one free year of membership in the [Appalachian Branch](https://www.appaalas.org/appalachian-branch) of AALAS. Attach a copy of your certificate to your membership application and send no monies.

TBR Corner

Greetings all!!!!... from Music City Nashville!

Summer is here and in full force.....can ya feel the heat?? Lots of good info in this quarterly newsletter! I have the latest info on AALAS topics for you below. Just a few reminders that we welcome your input for the Colleague corner. Do you know a coworker you would like to recognize? Or maybe you would like to introduce yourself to the Branch? Let us do a feature spotlight and say hello! Just email me a name and email address and I will do the rest!

How about sharing some interesting tech tips? We are all looking for ways to work smarter!!!! Why not share with us?!



Need info about AALAS certification?....Submitting a nomination for an award?Want help with a talk topic or submission?....Need help navigating the Learning Library?....Interested in attending the National Meeting? Let me assist you with answers to these questions and more. I am your Branch representative and I am here to help you anyway I can. My email address is Donna.M.Lemay@vanderbilt.edu and I am just a click away!

So stay tuned folks for some National AALAS news and keep in touch! Have an awesome summer!!!!

AALAS store has great techniques training book to help in teaching procedures. Check them out at <https://www.aalas.org/store/list> The 7th edition of the Laboratory Regulatory workbook is also available. This workbook is designed to assist those who are learning about laboratory animal science and the regulations and guidelines that help provide for the humane care and use of laboratory animals. This workbook can help technicians prepare for the AALAS technician certification examinations and managers prepare for the Animal Resources examination. It may also be helpful when studying for other examinations related to the laboratory animal science field.

Got Pets??? Submit a picture to LASPro magazine and be a part of PET Talk 2016. Send a photo of your favorite feline , canine or special pet! Join in the fun! More info in the June issue of LASpro! send your pics to - laspro@aalas.org.

Don't forget if you plan to shop online, please consider Amazon.com They will donate a portion of your purchase to the AALAS Foundation! Let's go shopping!!! <https://smile.amazon.com> . Another way to donate to AALAS is to donate an item to the 2016 Silent and Live Auction at the National meeting in Charlotte. All proceeds received from the Silent & Live Auction help support the Foundation's mission to educate the public about the important role of animals in biomedical research and the caring professionals working in LAS. https://docs.google.com/forms/d/1RitLCATz8qiPu7-rNPRRM_TqvGt1pe5JCjcnqCLVFZs/viewform



It's the Great AALAS FOUNDATION 100 ALL STAR Race!!!! This is a challenge for contestants to paint/decorate a 6 inch wooden race car! You don't have to be a fast driver to enter! Check out more info at this link! <https://www.aalas.org/national-meeting/meeting-features/foundation-race#.V1ApKvkrJhE>

...continued on page 25



WWW.HIGHLANDSBIOMED.COM

Cage Washers, Decon, Bedding Control, Autoclaves

Steve Blevins, BS, RLATG

Telephone: 423.677.8624

Email: steve@highlandsbiomed.com



Christine Reaves

Strategic Account Manager
Research Models and Services

Harlan Laboratories, Inc.

8520 Allison Pointe Blvd.
Suite 400
Indianapolis, IN 46250
Phone 919 237-1741
Mobile 919 455-7701
Fax 919 287-2382
creaves@harlan.com

www.harlan.com

Bio Serv

Delivering Solutions...

◆ Nutritional ◆ Enrichment ◆ Medicated ◆ Special Needs

Karen Froberg-Fejko
LATg, VMD

President

Phone: 800-996-9908 ext. 135

Email: kfroberg@bio-serv.com

800-996-9908
(US and Canada)

908-284-2155
(International)

Fax: 908-284-4753

3 Foster Lane, Suite 201
Flemington, NJ 08822

ISO 9001:2008 Certified

www.bio-serv.com



Lab Bedding Products

Andrea Gay
Regional Sales Manager
International Sales

(269) 623-8078 Office

(269) 567-0146 Cell

(269) 623-8075 Fax

P.O. Box 86
Plainwell, MI 49080

andrea_gay@andersonsinc.com
www.andersonslabbedding.com



Donald M. Basil
President

LYNX Product Group, LLC
650 Lake Street
Wilson, NY 14172

**Washing
and
decontamination
systems**

Phone: (716) 751-3100

Cell: (716) 830-1489

Fax: (716) 751-3101

E-Mail: donbasil@lynxpg.com

TECNIPLAST

Jon LEDFORD
regional sales director

Cell 484 798 7687 • E-Mail: jledford@tecniplastusa.com

Tecniplast USA
PO Box 1209
West Chester, PA 19380
Toll Free 877 669 2243
Fax 484 875 0511
www.tecniplastusa.com



BIORESOURCES

Pam Huber
Customer Service Manager

Marshall BioResources
5800 Lake Bluff Road, North Rose, NY 14516 U.S.A.

Phone: 315.587.2295 Fax: 315.587.2109

phuber@marshallbio.com

www.marshallbioresources.com

Ancare

Better Products. Better Science.

Nancy McCormick
Regional Sales Manager

484.593.0730

nancy@ancare.com

800.645.6379

www.ancare.com

Individual membership

Appalachian Branch American Association for Laboratory Animal Science INDIVIDUAL MEMBERSHIP APPLICATION

Annual dues include a quarterly newsletter subscription and free registration to Branch meetings. Check one:

Individual Membership: \$15.00/year _____ **Student** Membership: \$10.00/year _____

Institutional Membership: \$150.00/year _____

for 12 persons, attach correspondence information (as below) for each member

Complimentary: Have you passed an AALAS Certification exam at any level this year? Then you get one free year of membership, compliments of the Appalachian Branch. Attach a copy of your certificate to this form and send no money.

ALL MEMBERSHIP CATEGORIES: Please complete the information below for correspondence.

Name: _____

Company/Institution: _____

Title: _____

Address 1: _____

Address 2: _____

City, State, Zip: _____

Phone: _____ Fax: _____

E mail: _____

National AALAS Member? _____ Certification Level: _____ Registry Participant? _____

DEADLINE for listing in the annual directory is February 28 Please return a copy of this application and a check payable to The Appalachian Branch AALAS, to:

**Dana Gray
PO Box 1877
Mt. Juliet, TN 37121**

Membership is easy!

The Appalachian Branch of AALAS is a not-for-profit educational 501(c)3 association, chartered under the laws of the State of Tennessee. The Appalachian Branch is affiliated with the American Association for Laboratory Animal Science (AALAS™) and is one of five Branches in AALAS District IV. We are dedicated to the advancement of laboratory animal science primarily through education, training, and information exchange. The ultimate goal being the improvement of both human and animal health. In concert with this aim is the enhancement and development of the careers of our technicians, and recognizing their achievement via our awards program.

The Appalachian Branch of AALAS has several individual, institutional, and commercial members nationwide. We are geographically located in middle and east Tennessee, covering Nashville to Knoxville, and the Tri-Cities.

Membership is not regionally restricted and anyone professionally involved with the production, care, and study of laboratory animals is welcome to join.

You'll find both the individual membership and the corporate membership applications in this newsletter or [on our web pages](http://www.appaalas.org). Come and join us, you'll be glad you did!

Commercial Membership

Appalachian Branch American Association for Laboratory Animal Science COMMERCIAL MEMBERSHIP APPLICATION

Commercial Membership: For two representatives including business cards for each in the quarterly newsletter, web page links to your company and email links to your representatives. Please email digital business cards to the [Newsletter Editor](#) or enclose original business cards with this application. _____ \$75.00

Additional Newsletter Advertising Options

Newsletter Print Ads

| Pages | One Issue | Four Issues | Digital ads are preferred and may be emailed to the Newsletter Editor or include your hard copy advertisement with this application. |
|-----------|-----------|-------------|--|
| 1/4 page | \$25.00 | \$80.00 | |
| 1/2 page | \$50.00 | \$175.00 | |
| Full page | \$100.00 | \$350.00 | Specify the preferred month for one-issue ads: __ March, __ June, __ September, __ December |

TOTAL ENCLOSED _____ **Thank You for Your Support!**

Please complete the sales representative information below for correspondence.

Name: _____
Company: _____
Title: _____
Address: _____
City, State, Zip _____
Phone: _____ Fax: _____
E-mail: _____

Name: _____
Company: _____
Title: _____
Address: _____
City, State, Zip _____
Phone: _____ Fax: _____
E-mail: _____

DEADLINE for listing in the annual directory is February 28. Please return a copy of this application and a check payable to The Appalachian Branch of AALAS to:

Dana Gray
P.O. Box 1877
Mt. Juliet, TN 37121

If you pay via PayPal, you may email a copy of this application to Dana.Gray.AppBranch@gmail.com.



tick@lab - Regulatory Compliant Software for
Animal Research Facilities



IACUC
Protocol Management
Capacity Planning
Vet Records
Breeding
...and much more

a-tune software Inc.
3000 Joe DiMaggio Blvd
Suite 57
Round Rock, TX 78665

T: (512) 243-8539
www.a-tune.com



AALAS LEARNING LIBRARY
Animal Care and Use in Research and Education

About ALL Libraries Course Catalog Help Center

**Online training,
created with you in mind.**

If you are involved with the
care and use of
laboratory animals,
the AALAS Learning Library
meets your needs.

Login:

forgot username or password?

The [AALAS Learning Library](http://www.aalas.org) provides training that is essential for technicians, veterinarians, managers, IACUC members, and investigators working with animals in a research or education setting.

Emphasizing the appropriate handling, care, and use of animals, the courses are designed to help you study for AALAS certification, meet training mandates of regulatory agencies, and improve your knowledge in technical areas.

Get the highest cage density per square foot through our unique carousel rack design.



There is no need to move racks or waste space with large aisles; the carousel rotates, providing easy access to all cages.

- Patented motor-free exhaust technology. No noise, vibration or air turbulence.
- Containment - Prevent the release of allergens, odors and infectious agents.
- Isolation - Prevent environmental and biological cross-contamination.



**The most stable micro-environment
to help reduce the number of
scientific variables.**



Animal Care | Systems
www.animalcaresystems.com 1.888.827.3861

TBR Corner (...continued)

The AALAS Foundation needs 50 volunteers to serve as tour guides at this year's AREA program in Charlotte! Will you be attending the meeting? Can you help? We are excited that 125 Charlotte area high school and middle school students have already signed up to participate in this year's program at the 2016 National Meeting! If you've served as an AREA Program Tour Guide in the past, you know what a FUN and REWARDING experience it is to help educate young students about the important role of animals in research. Click the link below for more information and to sign up to volunteer! Tour Guides MUST be registered attendees of the 2016 AALAS National Meeting. <https://docs.google.com/forms/d/1N5WDzETMAMBtqiSKtV0MJyQwDQFZ53ob-aSxc12sYso/viewform>

The Foundation has been reaching out in a big way and they are available to help your community. Have you conducted a recent outreach event in your community lately? Planning one in the near future? Here are a few recent events we visited and had a booth with awesome info and handouts to educate our communities.

- ◇ West Washington University recently hosted a GEMS (Girls in Engineering, Math & Science) Fair – to inspire young women in their community to pursue STEM-related careers.
- ◇ AALAS member, Andrea Swanson, and other local LAS professionals, participated in this event by hosting a table on biomedical research and careers. AALAS member, Emily Reimold, along with 40 other volunteers from different scientific backgrounds, recently conducted an outreach program – “Women in Science Day”. The purpose of the event was to educate elementary students about the vast options of careers in the field of science. Approximately 500 students, from kindergarten through 4th grade, attended this educational and fun event.
- ◇ The Texas Branch AALAS recently conducted an AREA Program at their Branch meeting. A mix of high school and vet tech students attended and participated in this educational outreach program.
- ◇ The AALAS Foundation was excited to be exhibiting the last week in March at the National Catholic Educators Association conference in San Diego - it's the largest conference of private school teachers!
- ◇ AALAS partnered with AMP at the USA Science & Engineering Festival mid-April in Washington, DC! Over 300,000 people attended this fun and educational event!
- ◇ Many Appalachian Branch members volunteered at the National Science Teachers Association Conference held in Music City Nashville this past April. We partnered with Sally Westlake and had a great time teaching the “Teachers” all about AALAS and Laboratory animal Science.

We'd love to hear from you and how you're helping get the word out about the compassionate professionals working in LAS and the many career opportunities available in biomedical research. Email us at foundation@aalas.org and let us know what you're doing and how we might be able to help by providing free resource materials.

The AALAS Learning Library is getting a new look! Follow us on Facebook for new development updates and launch date announcements! Stay tuned as we will give 30 days notice prior to the new site going live.

Last But not least.....Registration is now open for the 67th National AALAS meeting on Oct 30 – Nov 3 in Charlotte, NC!!!! Please stay tuned to the AALAS website, Facebook and Twitter for more information as it develops! <http://myemail.constantcontact.com/National-Meeting-Registration-Is-Now-Open.html?soid=1101442511563&aid=PHUuzVrkaws>

Thank you all for reading the TBR corner and catching up with AALAS! Please email me if you have questions, concerns, ideas or comments @ Donna.M.Lemay@vanderbilt.edu

Your *Technician Branch Representative (TBR)* serves as the connection between lab animal technicians and national AALAS. The TBR is the voice of the technician community!

Your TBR can help you to share your ideas or suggestions, promote research, help you to become more involved in AALAS (local and national), or help you find answers to questions you may have.

Colleague Corner



Welcome to the Colleague Corner. I would like to introduce you to **Atef Khalil**.

Atef is a member of Vanderbilt University Medical Center and started with the Division of Animal Care 10 years ago. His first role there, was as a Veterinary Technician and he enjoyed caring for all of their animals. A few years ago he moved to the Translational Pathology Shared Resource Lab as a Comparative Pathology Technician. His favorite part of the job is performing

necropsies. He enjoys putting the pieces of the puzzle together, regarding his animal subjects.

Atef is originally from Egypt and now lives in Nashville. He has a beautiful wife and children and loves being a father. Besides being a great family man, he has quite a passion for soccer!



His AALAS certification is ALAT and LAT. He was a veterinarian while he lived in

Egypt. He has been working very hard to complete the 4 step of the North American Veterinary Licensing exam. He recently received word that he has passed those tests and is now a licensed Veterinarian in the United States. Everyone at Vanderbilt is very proud of his accomplishments and look forward to new and exciting things in his future.

Congratulations Atef!!

Submitted By: Donna LeMay



Animal Care | Systems

Rich VanDewater
Director of Sales

Phone 720.283.0177
Fax 720.283.0179
Toll Free 1.888.827.3861
Cell 303.249.7930

7086 S. Revere Parkway
Centennial, CO 80112

rvandewater@animalcaresystems.com
www.animalcaresystems.com

News & Views

Appalachian Branch

Section Contributors:

Steve Blevins
Erin Fickle
Jennie Hoard
Donna LeMay
Yolanda Perez
Lauren Rosa
Erin Yu



Animal Care | Systems

John Park
Manager of Business Development
South Central US & Mexico

Office: 832.529.4118
Cell: 979.595.3674

7086 S. Revere Parkway
Centennial, CO 80112
Toll Free: 1.888.827.3861
Fax: 720.283.0179

jpark@animalcaresystems.com
www.animalcaresystems.com